

Coorong National Park



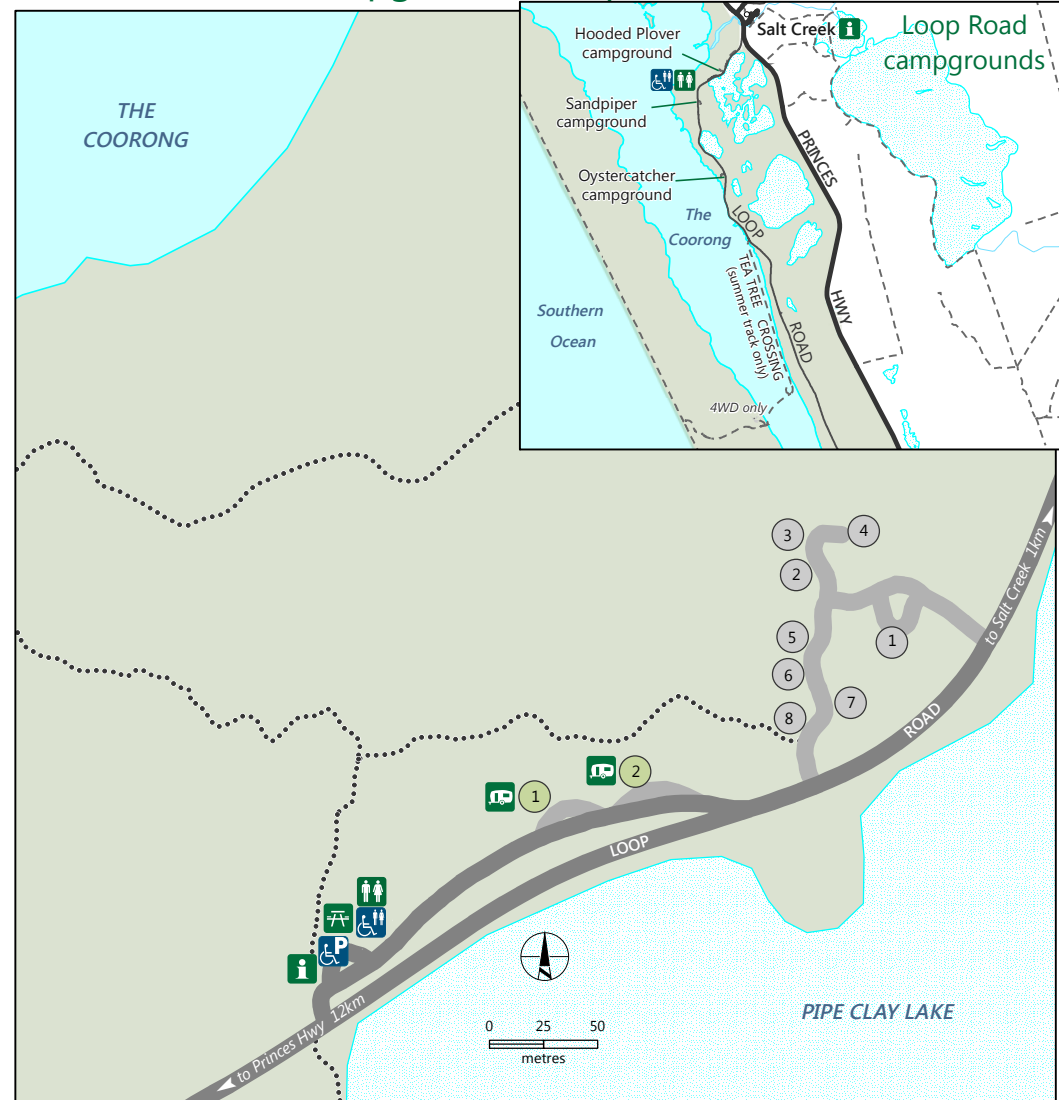
Government of South Australia



National Parks South Australia



Hooded Plover campground, Loop Road



DISCLAIMER: The accessible facilities listed in Coorong National Park may not meet current Australian Standards. The accessible toilets are basic and the trail surfaces between car parks and toilets are compacted gravel. If you need more information about accessibility in the Park please visit www.parks.sa.gov.au/know-before-you-go/accessibility

DEW does not guarantee that this map is error free. Use of the map is at the user's sole risk and the information contained on the map may be subject to change without notice. Cartography by DEW, Mapland - 2019

Book online at parks.sa.gov.au
Get the Avenza PDF Maps app to use park maps on your phone.
For more information, contact: (08) 8735 1177