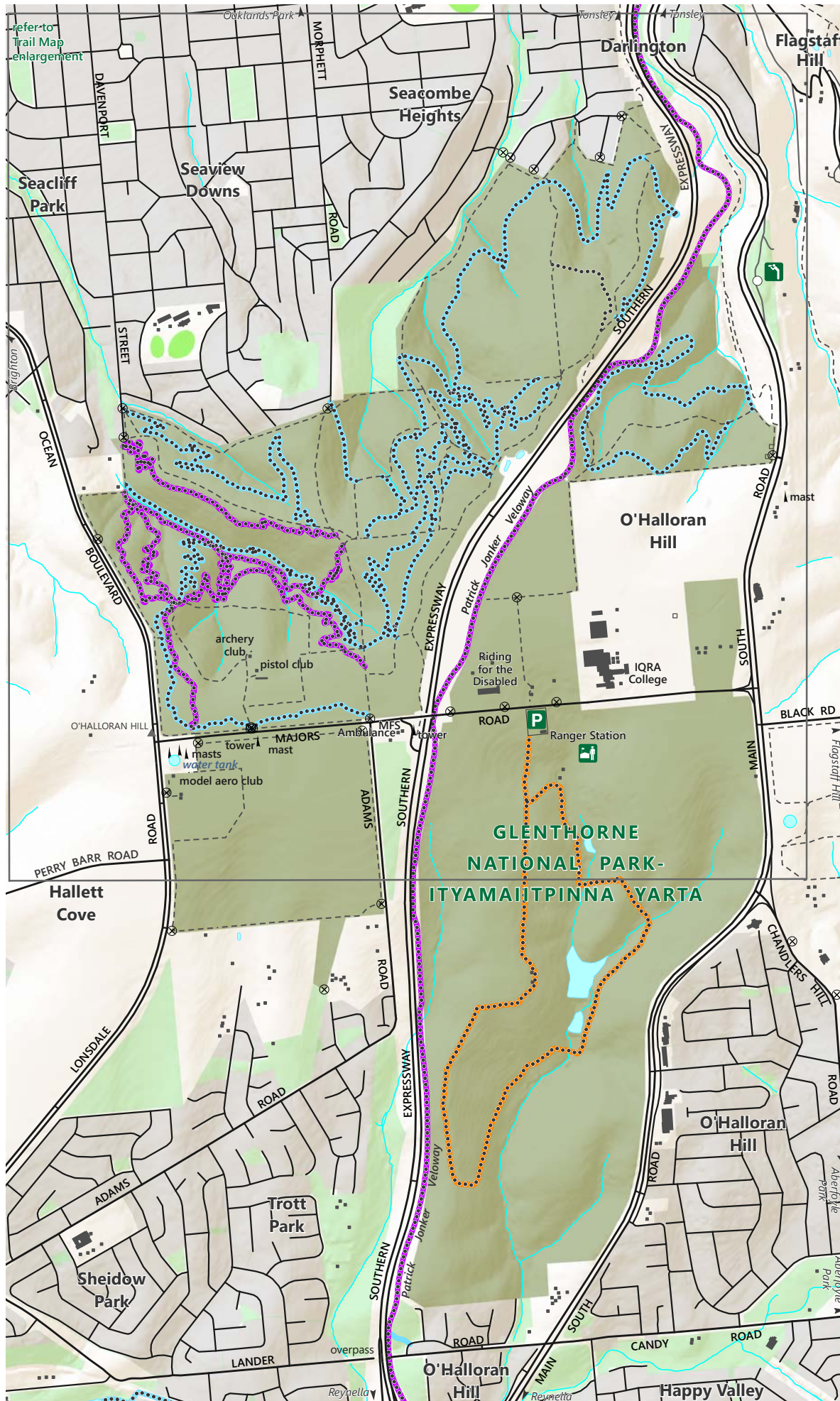


Glenthorne National Park-Ityamaiitpinna Yarta

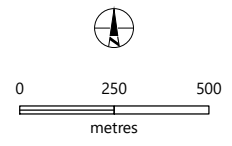
Part of the Glenthorne National Park-Ityamaiitpinna Yarta Precinct



Government of South Australia

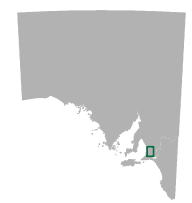


- Glenthorne Loop Trail
- Shared use trails - cycling and walking
- Cycling only
- Sealed road
- Unsealed road
- Vehicular track; Gate
- Trail
- Building
- Ruin
- Glenthorne National Park-Ityamaiitpinna Yarta
- Local reserves
- Built-up area
- Watercourse
- Waterbody
- Oval
- Lookout
- Parking
- Ranger Station



The proposed Glenthorne National Park-Ityamaiitpinna Yarta Precinct comprises

- Glenthorne National Park-Ityamaiitpinna Yarta (incorporating the former O'Halloran Hill Recreation Park)
- Marino Conservation Park
- Hallett Cove Conservation Park
- Happy Valley Reservoir
- areas of the Field River Valley



DEW does not guarantee that this map is error free. Use of the map is at the user's sole risk and the information contained on the map may be subject to change without notice. Cartography by DEW, Mapland - 2020

Visit parks.sa.gov.au
Get the Avenza Maps app to use park maps on your phone.

For more information contact:
Department for Environment and Water
E: parks@sa.gov.au
P: 08 8207 7700