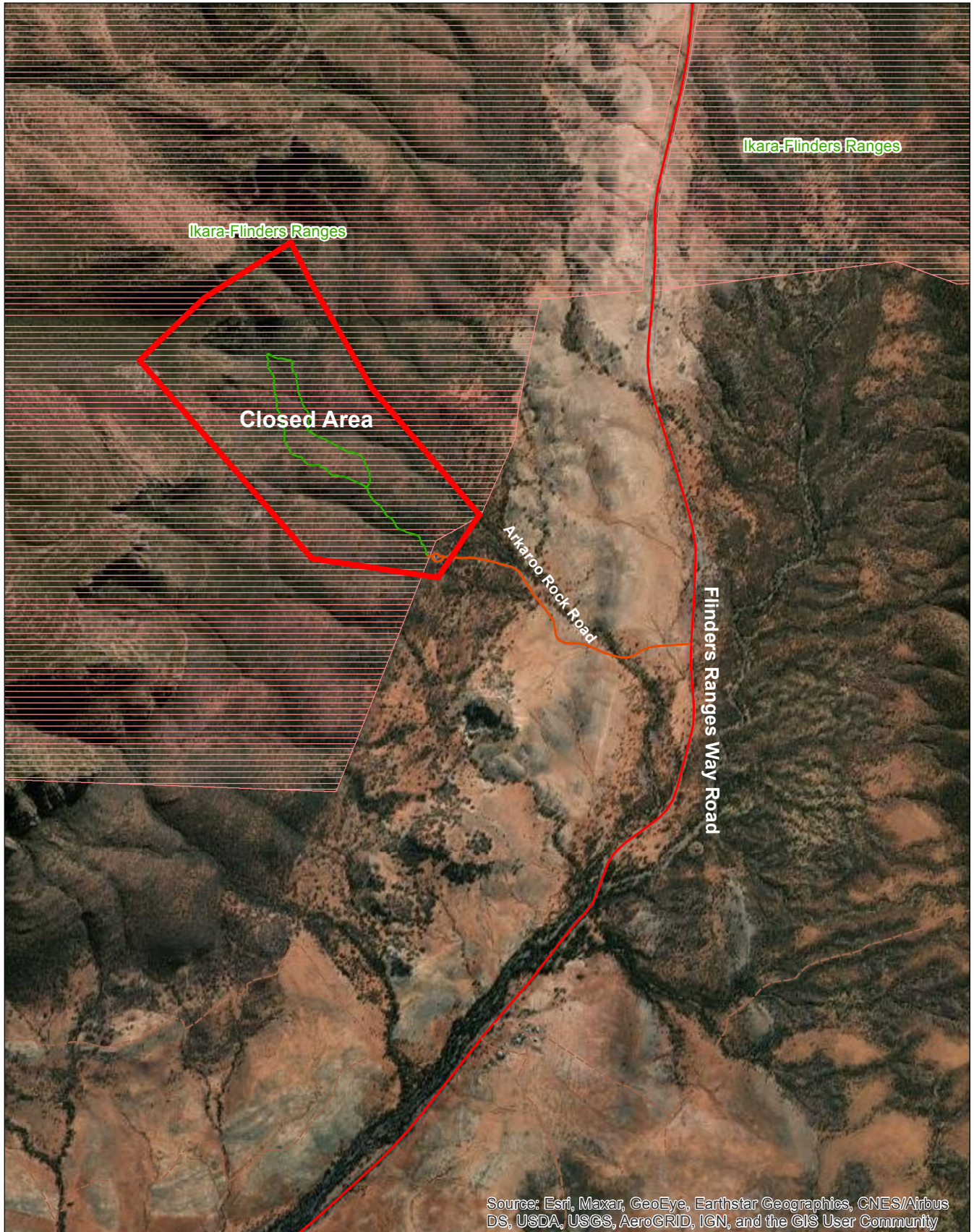
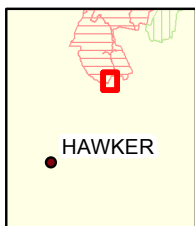


# Ikara-Flinders Ranges National Park

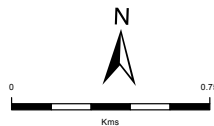
## Arkaroo Rock Closure



Source: Esri, Maxar, GeoEye, Earthstar Geographics, CNES/Airbus DS, USDA, USGS, AeroGRID, IGN, and the GIS User Community



**Produced by** Project and Asset Service  
Department for Environment and Water  
81-95 Waymouth Street, Adelaide SA 5000  
<https://www.parks.sa.gov.au>  
**Data Source** DEW 2021  
**Compiled** 9 June 2021  
**Projection** Lambert Conformal Conic  
**Datum** Geocentric Datum of Australia, 1994



© Copyright Department for Environment and Water 2020.  
All Rights Reserved. All works and information displayed are subject to Copyright. For the reproduction or publication beyond that permitted by the Copyright Act 1968 (Cwth) written permission must be sought from the Department.  
Although every effort has been made to ensure the accuracy of the information displayed, the Department, its agents, officers and employees make no representations, either express or implied, that the information displayed is accurate or fit for any purpose and expressly disclaims all liability for loss or damage arising from reliance upon the information displayed.