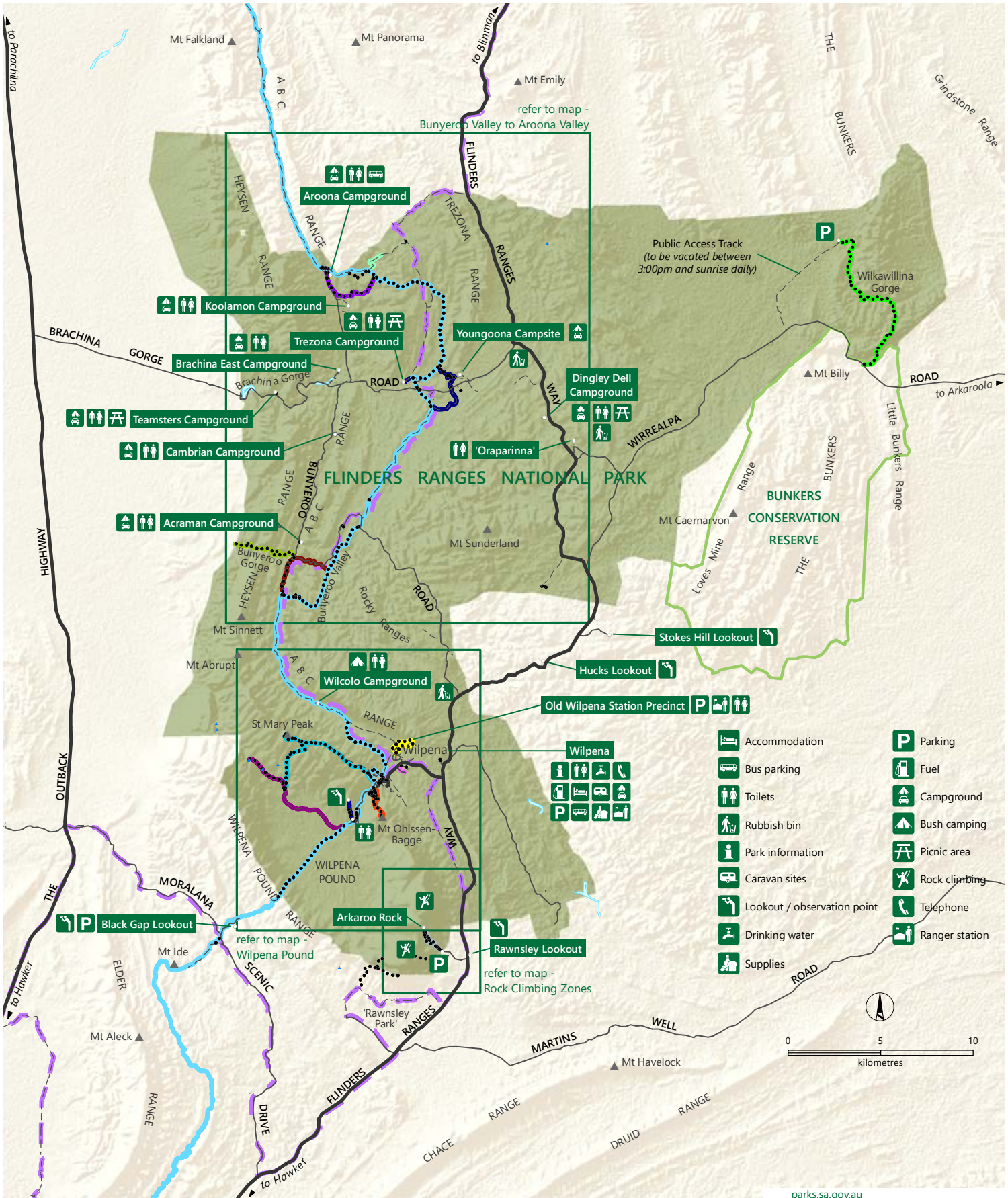
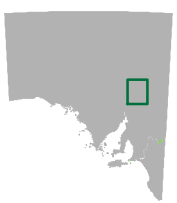


Ikara - Flinders Ranges National Park



- | | | | |
|--|-----------------------------|--|----------------|
| | Accommodation | | Parking |
| | Bus parking | | Fuel |
| | Toilets | | Campground |
| | Rubbish bin | | Bush camping |
| | Park information | | Picnic area |
| | Caravan sites | | Rock climbing |
| | Lookout / observation point | | Telephone |
| | Drinking water | | Ranger station |
| | Supplies | | |



- | | | | | | |
|--|-----------------|--|--------------------------|--|----------------------------------|
| | Sealed road | | Heysen Trail | | St Mary Peak Hike |
| | Unsealed road | | Arkaroo Rock Hike | | Trezona Hike |
| | Vehicular track | | Boom and Bust Hike | | Wangara Lookout Hike |
| | Walking trail | | Bunyeroo Gorge Hike | | Wilcolo Circuit Hike |
| | | | Living with Land Walk | | Wilkavillina Gorge Hike |
| | | | Malloga Falls Hike | | Wilpena Solar Power Station Walk |
| | | | Mount Ohlssen-Bagge Hike | | Yuluna Hike |
| | | | Red Hill Lookout Hike | | Mawson Trail |

parks.sa.gov.au

DEW does not guarantee that this map is error free. Use of the map is at the user's sole risk and the information contained on the map may be subject to change without notice. Cartography by DEW, Mapland - 2020

Use this map on your mobile: search Avenza PDF Maps

For more information contact:
 Department for Environment and Water
 Phone: (+61 8) 8207 7700
 Email: parks@sa.gov.au
www.environment.sa.gov.au/parks