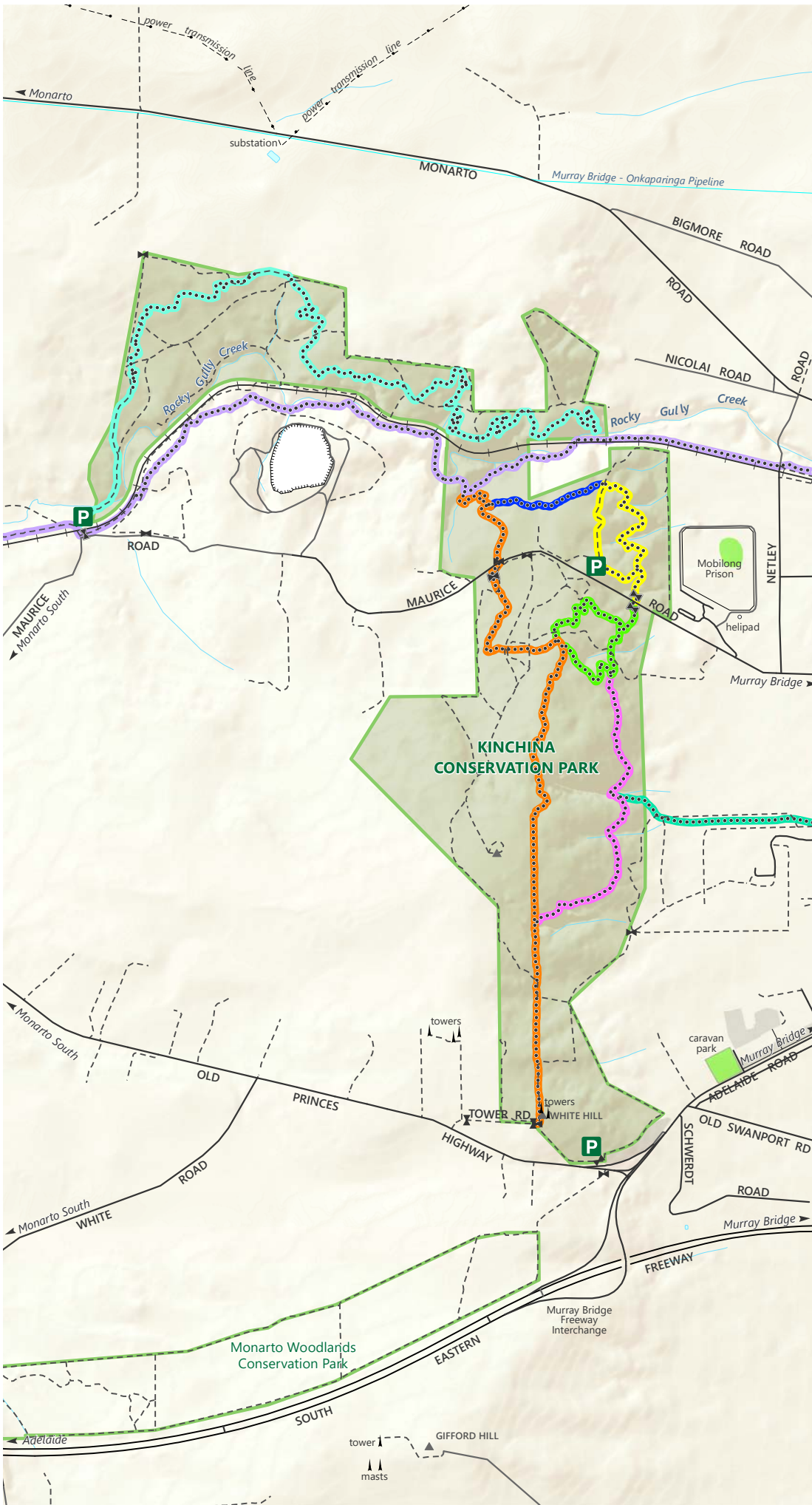


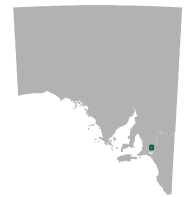
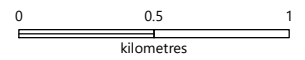
Kinchina Conservation Park



Government of South Australia



- P** Parking
- Lavender Federation Trail
- Jailbreak Trail - 4.2km
- Cemetery Trail - 1.7km
- Jailhouse Rocks Loop - 1.8km
- Getaway Car Loop - 1.9km
- Rocky Gully Link - 0.6km
- Cemetery Spur Trail - 1.3km
- Cypress Hill Trail - 6.3km
- Sealed road
- Unsealed road
- Track
- Walking trail
- Railway
- Kinchina Conservation Park
- Water - perennial
- Quarry
- ✂ Gate



DEW does not guarantee that this map is error free. Use of the map is at the user's sole risk and the information contained on the map may be subject to change without notice. Cartography by DEW, Mapland - 2019

Visit parks.sa.gov.au

Get the Avenza PDF Maps app to use park maps on your phone.

For more information, contact:
 Department for Environment and Water
 E: parks@sa.gov.au
 P: 08 8207 7700