

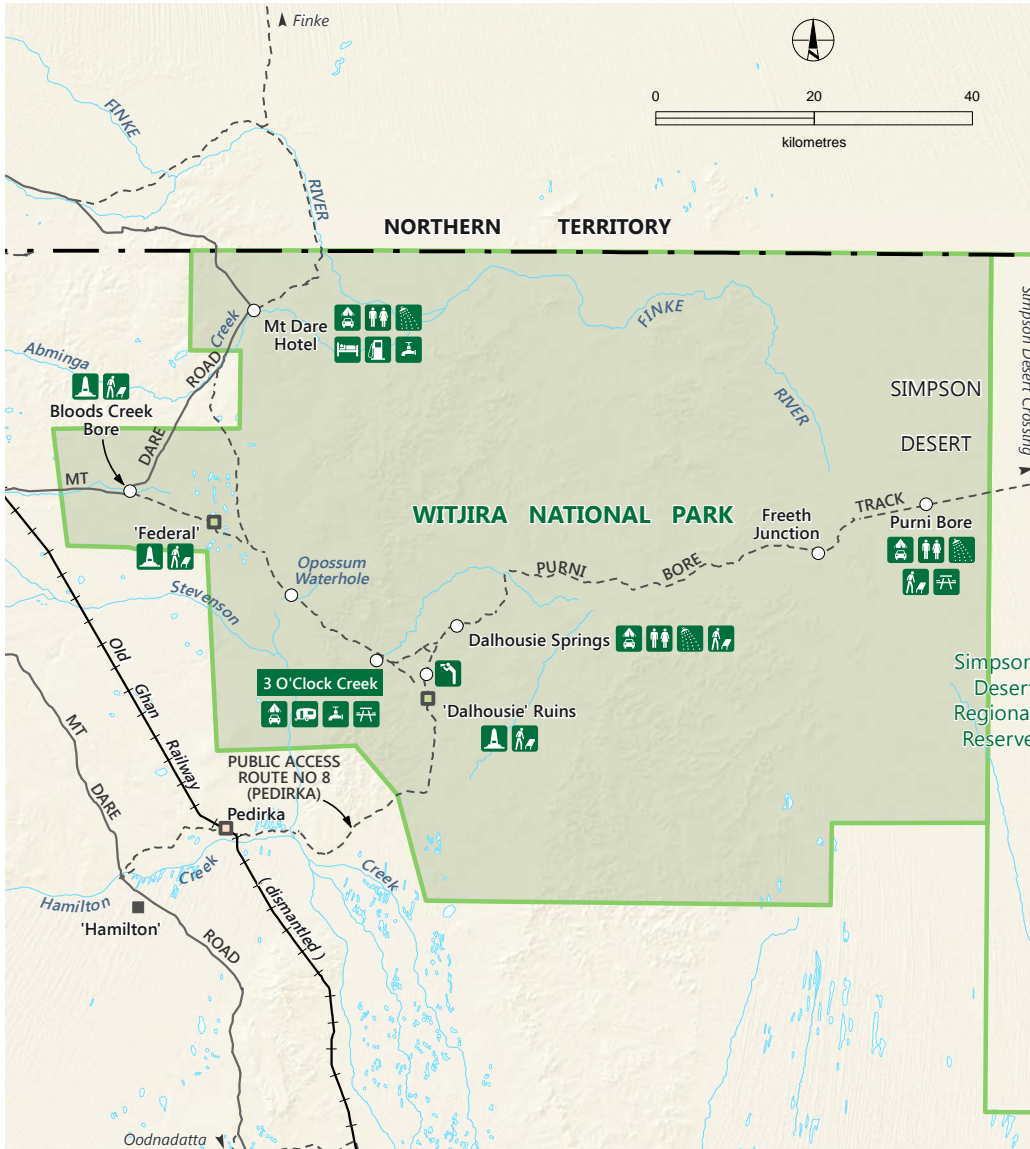
Witjira National Park



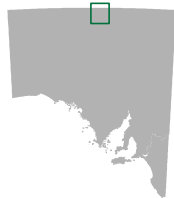
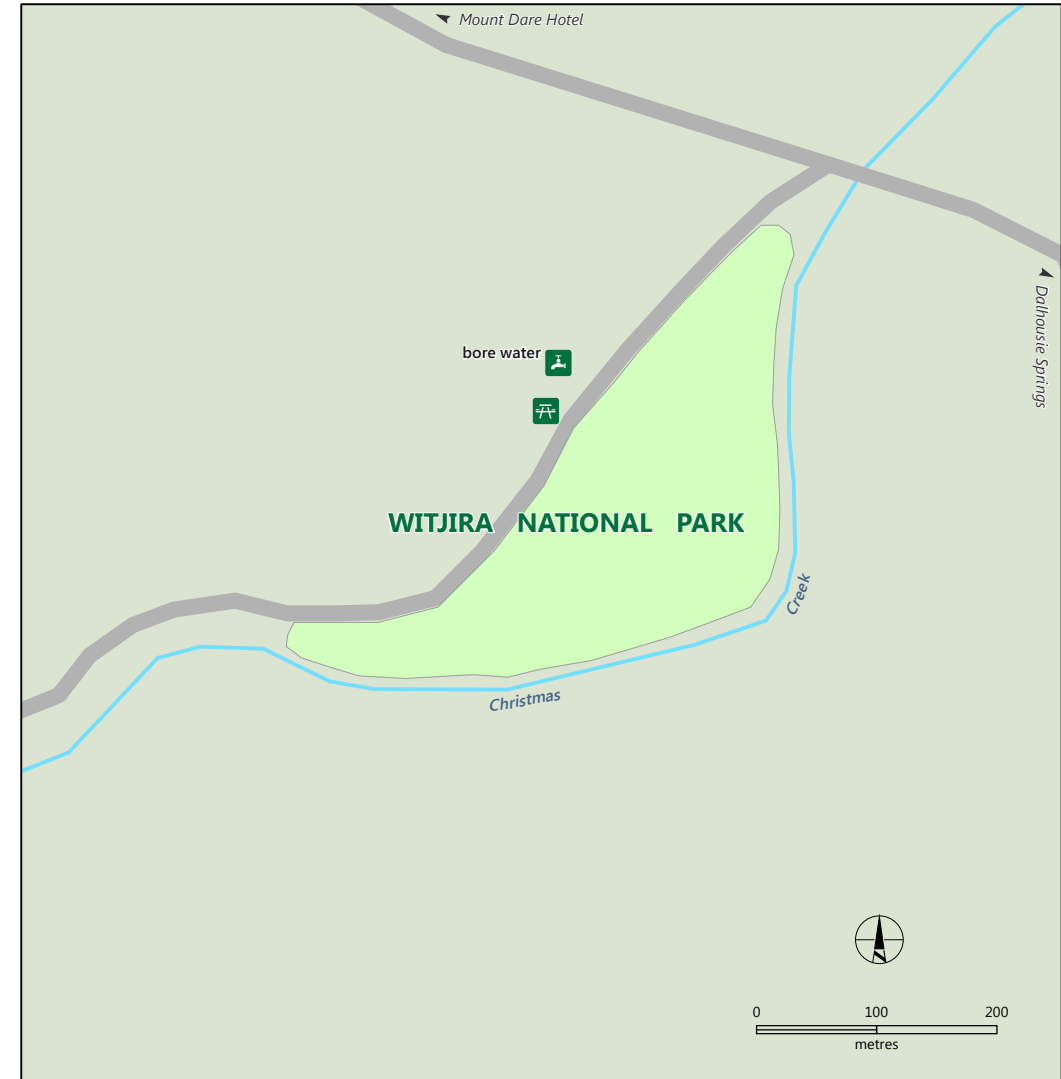
Government of South Australia



National Parks South Australia



3 O'Clock Creek Campground



- | | | | |
|--|-----------------------|---------------|-------------------|
| Witjira National Park | Salt lake - often dry | Accommodation | Water available |
| Unallocated campsites suitable for caravans, camper trailers and tents | Locality | Campground | Picnic table |
| Unsealed road | Pastoral homestead | Caravan sites | Interpretive walk |
| Track | Significant ruin | Fuel | Historic site |
| State border | | Toilets | Lookout |
| | | Hot shower | |

DEWNR does not guarantee that this map is error free. Use of the map is at the user's sole risk and the information contained on the map may be subject to change without notice. Cartography by DEWNR, Mapland - 2018

Visit parks.sa.gov.au
Get the Avenza PDF Maps app to use park maps on your phone.

For more information, contact: (08) 8648 5328